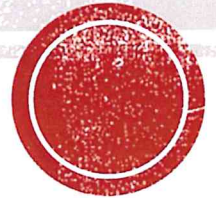


RETURN TO IN-PERSON INSTRUCTION

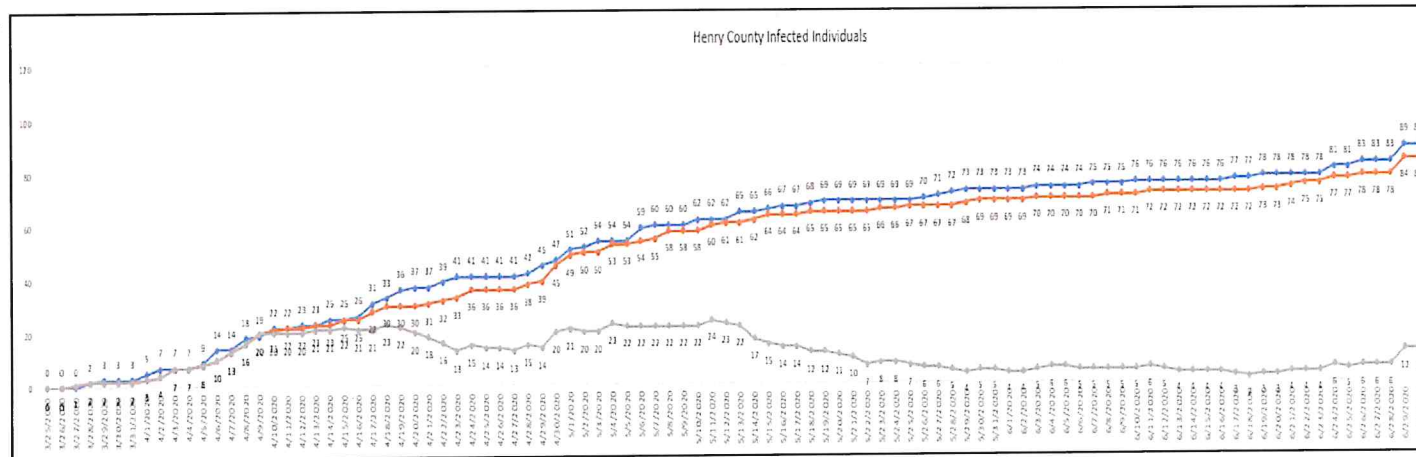
What does it look like at Geneseo CUSD 228?

A brief overview.

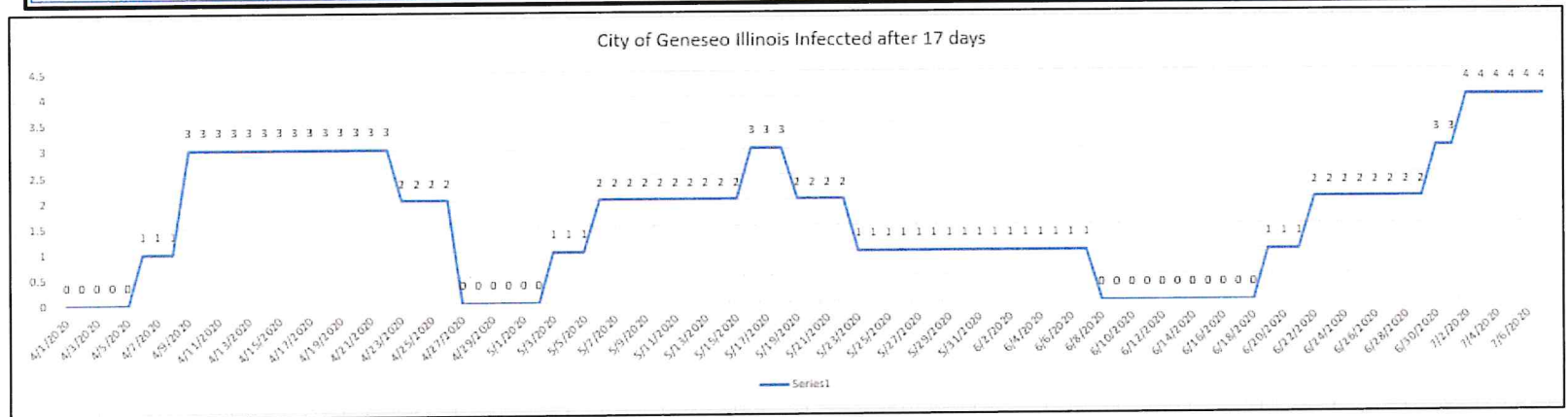
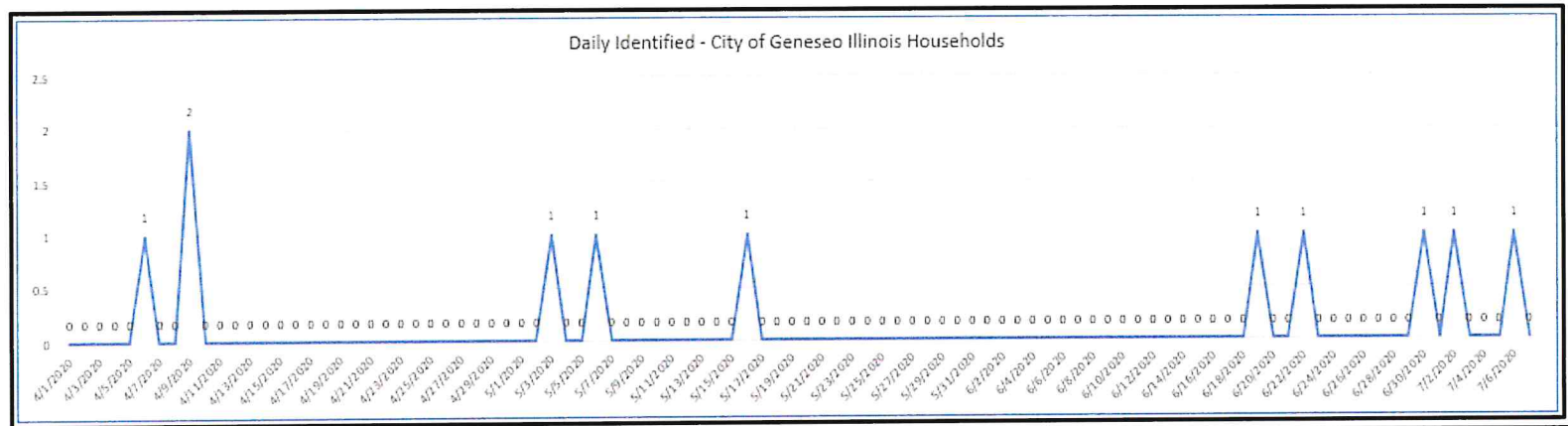


CURRENT METRICS LOOK FAVORABLE

- Current Henry County statistics are favorable and should be considered when we speak about conditions and risk. As of 7/7/20:
- Henry County Population: 48,913
- 103 total confirmed cases (0.2%)
- After 17 days, how many have symptoms resolved (meaning they are no longer infectious)? There are currently 24 “active” households.
- Numbers for the city of Geneseo look even better (graphs on the next slide)
- 1 currently in the hospital
- 1 death (0.002%)



Q: HOW MANY ACTIVE CASES IN GENESEO? (7/1/20)
A: FOUR HOUSEHOLDS



REQUIREMENTS TO ENHANCE SAFETY

Appropriate social distancing, face coverings, enhanced sanitation measures, and other accommodations will be necessary to ensure the safety of students, staff, and their families. During Phase 4, IDPH guidelines will:

- Require use of appropriate personal protective equipment (PPE), including face coverings;
- Prohibit more than 50 individuals from gathering in one space;
- Require social distancing be observed, as much as possible;
- Require that schools conduct symptom screenings and temperature checks or require that individuals self-certify that they are free of symptoms before entering school buildings; and
- Require an increase in schoolwide cleaning and disinfection.

FAMILIES WILL HAVE TWO OPTIONS

■ In-Person Instruction

- Students will receive a temperature and symptom screening every day before being allowed to enter the school building
- Students and staff will be required to wear a mask indoors at all times, except during lunch or band
- Students may bring their own mask from home, but a cloth mask will be provided by the state

■ Remote Learning (while in-person is active)

- Some synchronous learning opportunities may be available, but most learning may be asynchronous
- Students will be required to meet similar academic standards, but may have slightly different assignments or timelines from their teachers
- A family that chooses this option will be required to remain in this option for the remainder of the semester

IN-PERSON INSTRUCTION

- Our goal is to do it as safely as possible, for as long as possible.
- We will not require every student to be tested for COVID before school starts.
- If a student has a fever when they arrive, they will be denied access to the building. If they have siblings, they will need to go home as well. We are not qualified to distinguish between a COVID fever and a non-COVID fever.
- It will be recommended that the student(s) be tested if COVID symptoms begin or persist. We will follow the IDPH's timeline for a safe return to school depending if a COVID test is taken and the results of such test (up to 14 days).
- If a student tests positive, we will work with the Emergency Operations Center to contact trace the student's path and notify other students who may have been exposed, while protecting the privacy of the one who tests positive.

TRANSITIONING TO REMOTE LEARNING

- Neither a few fevers, nor a single positive case will necessitate closing our schools.
- It may however, lead to closing a single class or an individual building. At such time, those affected would immediately transition to Remote Learning.
- If we are unable to adequately staff our buildings or if we have enough students out of school, we will be prepared to transition to 100% Remote Learning at any time.
- If we transition to 100% Remote Learning, we will follow our updated Plan from the spring and remain in that modality for as long as necessary.