

ILLINOIS STATE BOARD OF EDUCATION
Division of Funding and Disbursement Services
General State Aid (105 ILCS 5/18-18.05)

Foundation Level	FY 2005	FY 2006	FY 2007	FY 2008	FY 2009	FY 2010	FY 2011	FY 2012	FY 2013	FY 2014
General Assembly - Passed Level	\$4,964	\$5,164	\$5,334	\$5,734	\$5,959	\$6,119	\$6,119	\$6,119	\$6,119	\$0

Appropriation	\$3,682,201,200	\$3,903,969,600	\$4,146,118,200	\$4,454,500,000	\$4,581,561,600	\$4,600,305,100	\$4,600,305,100	\$4,448,104,514	\$4,286,752,500	\$4,442,198,260
Common School Fund-412	\$2,950,301,200	\$3,238,409,600	\$3,312,558,200	\$3,089,540,000	\$2,993,478,800	\$3,207,090,100	\$3,997,865,800	\$3,828,841,763	\$3,896,090,800	\$4,038,198,260
Education Assistance Fund-007	\$731,900,000	\$665,560,000	\$833,560,000	\$1,364,960,000	\$549,095,200	\$602,439,300	\$602,439,300	\$309,631,376	\$390,661,700	\$404,000,000
General Revenue Fund-001	\$0	\$0	\$0	\$0	\$0	\$0	\$0	\$309,631,375	\$0	\$0
ARRA - SFSF Education					\$1,038,987,600	\$601,717,200	\$0	\$0	\$0	\$0
ARRA - SFSF Govt Services						\$189,058,500	\$0	\$0	\$0	\$0

Total Net Claim	\$3,685,931,334	\$3,895,704,506	\$4,127,106,360	\$4,421,789,124	\$4,581,561,460	\$4,619,204,197	\$4,600,565,505	\$4,679,162,048	\$4,804,928,870	\$5,004,314,307
Audit Adjustments	\$23,756,792	\$20,745,368	\$20,313,031	\$8,553,816	\$20,751,231	\$19,375,692	\$22,231,115	\$22,403,800	\$20,317,776	\$27,613,489
Claim Prior To Adjustments	\$3,662,174,543	\$3,874,959,139	\$4,106,793,328	\$4,413,235,307	\$4,560,810,228	\$4,599,828,505	\$4,578,334,390	\$4,656,758,248	\$4,784,611,094	\$4,976,700,818
Formula Calculation	\$3,202,700,902	\$3,342,335,940	\$3,431,421,381	\$3,627,811,729	\$3,619,456,292	\$3,480,576,667	\$3,229,225,799	\$3,089,428,205	\$3,010,888,141	\$3,046,596,344
Poverty Calculation	\$459,473,640	\$532,623,199	\$675,371,947	\$785,423,578	\$941,353,936	\$1,119,251,838	\$1,349,108,591	\$1,567,330,043	\$1,773,722,953	\$1,930,104,474
Shortfall/Lapse	(\$3,730,134)	\$8,265,094	\$19,011,840	\$32,710,876	\$140	(\$18,899,097)	(\$260,405)	(\$231,057,534)	(\$518,176,370)	(\$562,116,047)
Proration	99%	100%	100%	100%	100%	98%	100%	95%	89%	89%
Prior Year Adjustment (PY)										
Hold Harmless	\$27,076,408	\$21,587,929	\$19,594,592	\$20,700,000	\$26,106,400	\$15,670,599	\$0	\$0	\$0	\$0

Elementary District Total	379	377	376	378	378	378	378	377	375	374
High School District Total	103	102	102	102	101	101	101	100	100	100
Unit District Total	399	395	395	390	390	389	388	388	387	386

Lab School Total (ISU & U of I)	2	2	2	2	2	2	2	2	2	2
Alternative Total (9200 Schools)	20	20	21	20	21	21	21	20	23	23
Safe School Total (9300 Schools)	46	46	43	44	44	47	47	47	47	47
ALOP Total (9500 Schools)	4	4	6	7	7	7	7	8	7	11

Foundation Formula Total	700	696	769	762	752	737	716	703	620	617
Lab/Alternative/Safe School Total	70	0	0	0	0	0	0	0	0	0
Alternate Formula Total	138	135	132	133	138	147	161	171	170	177
Flat Grant Formula Total	43	43	47	51	56	61	67	69	72	66

CODE 28-037-2280-26
 REGION BUREAU-HENRY-STARK ROE
 DISTRICT NAME GENESEO COMM UNIT SCH DIST 228

ILLINOIS STATE BOARD OF EDUCATION
 Division of Funding and Disbursement Services
 100 North First Street
 Springfield, Illinois 62777-0001

GENERAL STATE AID ENTITLEMENT FOR 2012-2013 PAYABLE IN 2013-2014

PART I - COMPUTATIONAL DATA

A.	2011 Original Equalized Assessed Valuation (EAV)		\$320,464,016
B.	7% Cap (Cook County Only)		\$0
C.	Enterprise Zone Abatements		\$0
D.	General Authority Abatements		\$0
E.	Property Tax Appeal Board Decisions		\$0
F.	Other EAV Adjustments		\$0
1.	2011 Adjusted Equalized Assessed Valuation (EAV)		\$320,464,016
2.	Best 3 Months Average Daily Attendance (ADA):	10-11: 2,547.43 11-12: 2,509.43 12-13: 2,513.92	2,523.59
3.	2011 Corporate Personal Property Replacement Tax (CPPRT)(received in 2012)		\$422,476.25
4.	Calculation Rate		.0300
5.	DHS 3-Year Low Income Count Average	10: 560.00 11: 585.00 12: 595.00	580.00
6.	District Low Income Concentration (Line 5 divided by the most recent ADA from Line 2)		.2307
7.	Available Local Resources (Line 1 X Line 4 + Line 3)		\$10,036,396.73
8.	Local Resources Per Pupil (Line 7 divided by Line 2)		\$3,977.03
9.	Percentage of \$6,119 (Line 8 divided by \$6,119)		.6499

PART II - FOUNDATION FORMULA CALCULATIONS (Line 9 is less than .93)

1.	\$6,119 X ADA (Part I, Line 2)		\$15,441,847.21
2.	Available Local Resources (Part I, Line 7)		(\$10,036,396.73)
3.	Foundation Formula Claim Amount (Line 1 - Line 2)		\$5,405,450.48
4.	Foundation Formula Claim Per Pupil (Line 3 / Part 1, Line 2)		\$2,141.97

PART III - POVERTY GRANT CALCULATION

1.	LIC Conc. Level (Part 1 L-6) Squared x \$2,700 + 294.25 = LIC Factor:	437.89	
2.	X DHS Average:	580.00	
3.	= Calculated FY2014 Poverty Amount:	253,976.20	253,976.20

PART IV - SUMMARY OF 2012-2013 CLAIM PAYABLE IN 2013-2014

1.	Gross Entitlement (Poverty Grant + Formula Claim Amount)	\$5,659,426.68
	Adjustments:	

2.	Total Adjustments	
3.	Net Entitlement (Gross Entitlement - Total Adjustments)	\$5,659,426.68

PART V - HOLD HARMLESS GRANT (HH Base: \$5,616,776.99) N/A

5/29/2014

Illinois State Board of Education
 Christopher A. Koch, Ed.D., State Superintendent of Education
 Division of Funding and Disbursement Services
 General State Aid for School Year 2012-2013 Payable in FY 2014
 Payments Schedule as of July 31, 2013 Calculations

28 BUREAU-HENRY-STARK ROE

District Code	District Name	Payment 1 For :	Regular Payments								
		Prior Yr Adj 08/01/13	Pay #	Sched Date	Payment	Pay #	Sched Date	Payment	Pay #	Sched Date	Payment
037-2280-26	GENESEO COMM UNIT SC	0.00	2	08/10/13	228,212.67	10	12/10/13	228,188.58	18	04/10/14	228,188.58
			3	08/20/13	228,212.67	11	12/20/13	228,188.58	19	04/20/14	228,188.58
Net 2013 - 2014 Entitlement	5,659,426.68		4	09/10/13	228,188.58	12	01/10/14	228,188.58	20	05/10/14	228,188.58
Payment Total:	5,020,197.06		5	09/20/13	228,188.58	13	01/20/14	228,188.58	21	05/20/14	228,188.58
Differences:	639,229.62		6	10/10/13	228,188.58	14	02/10/14	228,188.58	22	06/10/14	228,188.58
			7	10/20/13	228,188.58	15	02/20/14	228,188.58	23	06/20/14	228,188.70
			8	11/10/13	228,188.58	16	03/10/14	228,188.58			
			9	11/20/13	228,188.58	17	03/20/14	228,188.58			

Illinois State Board of Education
 Christopher A. Koch, Ed.D., State Superintendent of Education
 Division of Funding and Disbursement Services

GSA Claim Form Attendance Analysis

District Name: GENESEO COMM UNIT SCH DIST 228
 RCDT Number: 28-037-2280-26-0000

School Year		GSA Claim Data					
	Month	Claimable Days	Days In Session	Claimable ADA	Mth Chg	Variance	Nonclaimable ADA
1	Aug/Sept	80,792.4	32	2,524.76		0.00%	21.76
2	Oct	55,121.2	22	2,505.50	(19.26)	-0.76%	21.13
3	Nov	40,060.9	16	2,503.80	(1.70)	-0.07%	21.31
4	Dec	34,661.2	14	2,475.80	(28.00)	-1.12%	21.46
5	Jan	44,099.6	18	2,449.97	(25.83)	-1.04%	20.77
6	Feb	46,523.9	19	2,448.62	(1.35)	-0.06%	19.26
7	Mar	37,171.6	15	2,478.10	29.48	1.20%	20.43
8	Apr	49,691.9	20	2,484.59	6.49	0.26%	19.77
9	May/June	47,545.8	19	2,502.41	17.82	0.72%	19.89
	Total	435,668.5	175	2,489.53			20.70

Prior School Year (2011 - 2012)	
GSA Claim Monthly ADA	Nonclaimable ADA
2,515.22	19.71
2,495.52	19.90
2,484.66	20.12
2,512.74	19.36
2,460.06	19.97
2,453.33	18.05
2,468.03	18.47
2,483.58	17.90
2,495.61	17.61
2,486.62	19.07

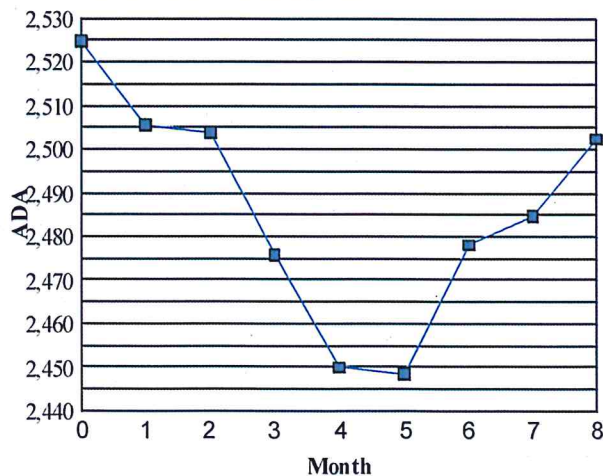
2012 - 2013 Best 3 Months ADA **2,513.92**
2011 - 2012 Best 3 Months ADA **2,509.43**
 Difference **4.49**
 % Increase or Decrease **0.18%**

2013 Fall Housing Report 2,652
 2012 Fall Housing Report 2,648
 Difference 4
 % Increase or Decrease 0.15%

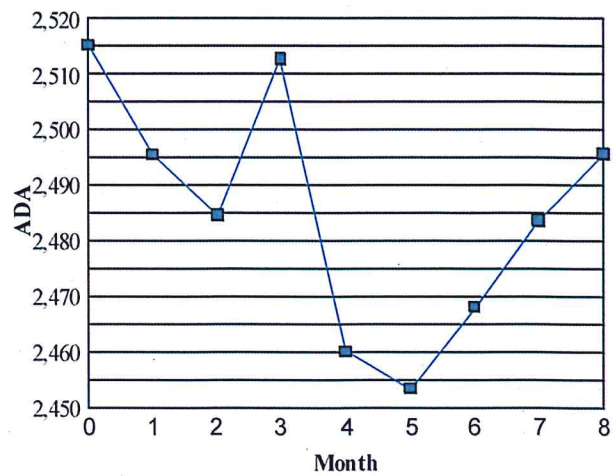
2012 - 2013 Nonclaimable ADA 20.70
 2011 - 2012 Nonclaimable ADA 19.07
 Difference 1.63
 % Increase or Decrease 8.55%

2012 - 2013 Line #11 ADA 58.79
 2011 - 2012 Line #11 ADA 47.55
 Difference 11.24
 % Increase or Decrease 23.64%

2012 - 2013 Monthly ADA



2011 - 2012 Monthly ADA



Illinois State Board of Education
 Christopher A. Koch, Ed.D., State Superintendent of Education
 Division of Funding and Disbursement Services

GSA Claim Form Attendance Analysis

District Name: GENESEO COMM UNIT SCH DIST 228
 RCDT Number: 28-037-2280-26-0000

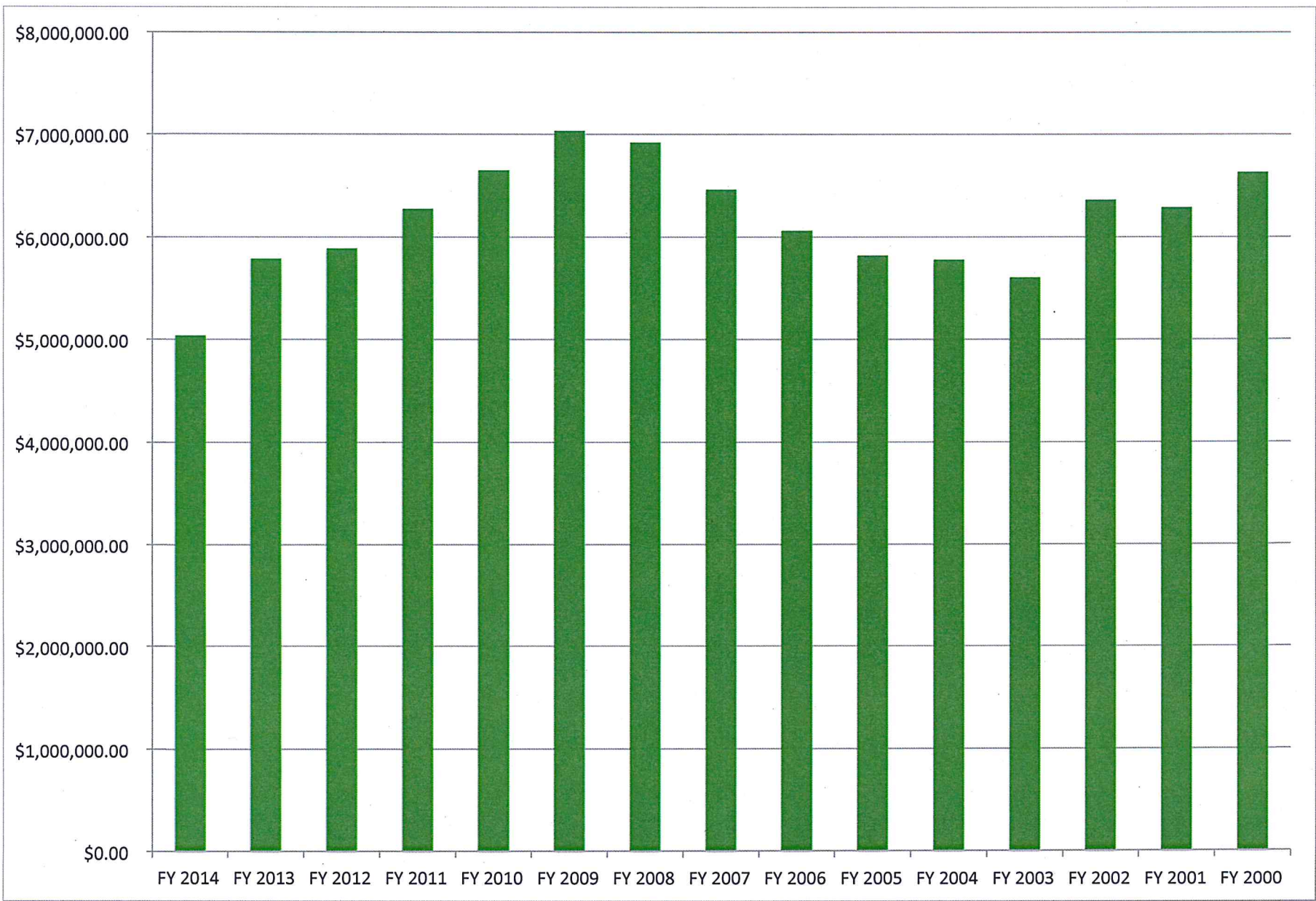
5 Year Best 3 Months Average Daily Attendance to Fall Housing Report Trend

	School Year				
	2012-2013	2011-2012	2010-2011	2009-2010	2008-2009
Best 3 Months ADA (A)	2,513.92	2,509.43	2,547.43	2,530.21	2,568.16
Change from Prior Year	4.49	-38.00	17.22	-37.95	
% Change	0.18%	-1.49%	0.68%	-1.48%	

	2013	2012	2011	2010	2009
Fall Housing Enrollment (E)	2,652.00	2,648.00	2,682.00	2,719.00	2,744.00
Change from Prior Year	4.00	-34.00	-37.00	-25.00	
% Change	0.15%	-1.27%	-1.36%	-0.91%	

SPREAD

Fall Housing Minus ADA (E-A)	138.08	138.57	134.57	188.79	175.84
Attendance as a % of Enrollment (A/E)	94.79%	94.77%	94.98%	93.06%	93.59%



DISTRICT	GSA							
	2006 - 2007	2007 - 2008	2008 - 2009	2009 - 2010	2010 - 2011	2011 - 2012	2012 - 2013	2013 - 2014
AlWood	1,119,175.32	1,244,122.44	1,228,431.86	1,086,389.15	907,756.91	797,891.10	849,461.30	743,730.38
Annawan	1,008,928.33	1,042,513.34	1,035,632.77	1,009,511.38	1,011,624.32	924,838.11	861,220.41	781,188.70
Bradford	685,557.11	850,728.37	851,554.70	965,323.83	566,395.20	316,337.94	299,245.39	246,352.09
Bureau Valley	3,525,613.96	3,625,446.06	3,592,238.78	3,373,500.81	3,205,415.82	3,032,077.91	3,066,549.58	3,111,825.49
Cambridge	1,642,283.00	1,743,041.07	1,852,376.80	1,782,431.42	1,687,603.29	1,611,719.06	1,620,661.94	1,537,948.42
Cherry G.S.	226,195.51	238,242.66	234,991.11	220,950.81	178,796.10	142,481.90	184,542.04	150,189.89
Colona	2,235,879.60	2,271,277.50	2,187,315.19	1,970,664.81	1,796,603.00	1,834,044.02	1,784,735.61	1,860,574.28
Dalzell G.S.	236,632.35	262,235.48	285,416.97	280,183.23	271,468.20	243,807.44	235,470.84	206,651.25
DePue *	2,039,433.52	2,108,621.83	2,345,704.41	2,341,423.56	2,495,750.30	2,495,499.86	2,641,866.85	2,639,842.50
Galva	1,975,801.69	2,245,067.93	2,246,235.39	2,241,696.63	2,110,876.36	2,028,377.95	1,956,303.02	1,880,862.23
Geneseo	6,466,606.66	6,924,298.20	7,032,511.75	6,652,317.61	6,277,876.06	5,892,174.84	5,787,973.32	5,659,426.68
Hall H.S.	1,478,562.98	1,695,133.54	1,664,921.35	1,664,384.78	1,505,612.72	1,419,496.22	1,366,624.14	1,031,989.22
Kewanee **	7,788,686.48	8,397,047.16	8,713,982.47	8,884,128.97	9,098,975.29	9,713,031.34	10,002,437.14	10,274,702.28
Ladd G.S.	861,327.33	723,058.80	725,081.40	727,491.13	654,952.75	624,214.60	746,987.53	556,650.18
LaMoille	597,339.59	928,314.16	1,085,757.41	923,318.49	783,517.83	621,150.99	517,903.50	562,749.39
Malden G.S.	145,521.58	166,278.69	393,968.90	207,100.68	198,005.15	158,663.20	157,106.19	133,382.22
Ohio G.S.	332,301.93	339,203.12	336,456.60	316,575.55	280,974.86	256,262.93	187,372.93	93,048.52
Ohio H.S.	163,691.40	179,265.79	190,784.56	168,717.64	137,016.75	97,337.58	55,348.23	22,468.89
Orion	2,376,735.23	2,576,009.73	2,511,643.39	2,521,416.27	2,386,358.41	2,245,368.35	2,239,890.41	2,179,139.01
Princeton G.S.	1,294,907.96	1,600,352.49	1,609,266.37	1,959,800.88	1,552,210.89	1,400,260.76	1,559,072.91	1,340,494.41
Princeton H.S.	1,119,399.31	1,025,993.55	1,056,043.81	1,206,899.93	1,151,352.73	1,055,493.93	939,298.66	633,145.74
Spring Valley	2,005,562.10	2,146,581.76	2,374,332.38	2,618,587.89	2,855,955.20	2,775,351.78	3,166,950.69	3,072,655.17
Stark County	2,039,495.56	2,233,318.34	2,471,304.45	2,421,266.25	2,236,885.17	2,018,184.89	1,794,906.50	1,666,252.47
Wethersfield	2,145,609.28	2,333,278.87	2,407,618.45	2,321,165.55	2,267,684.49	1,987,026.07	2,243,827.76	2,323,355.34

Proration Percentage	Gross GSA After Proration	Impact of Proration
90.60%	\$5,868,531.39	(608,876.33)
89.50%	\$5,795,279.90	(680,127.82)
83.00%	\$5,376,248.40	(1,101,159.32)
80.00%	\$5,181,926.17	(1,295,481.55)
75.00%	\$4,858,055.79	(1,619,351.93)
70.00%	\$4,534,185.40	(1,943,222.32)
65.00%	\$4,210,315.01	(2,267,092.71)
60.00%	\$3,886,444.63	(2,590,963.09)

Notes
1 ADA is calculated using current enrollment for all three years.
2 2013 DHS count was estimated at 605 since numbers are not posted for this year. This is a reflection of a growth of ten as indicated between 11 and 12
3 CPPRT is calculated on 2011 Rec'd in 2012 2012 Rec'd in 2013 was not posted