

Geneseo School
District

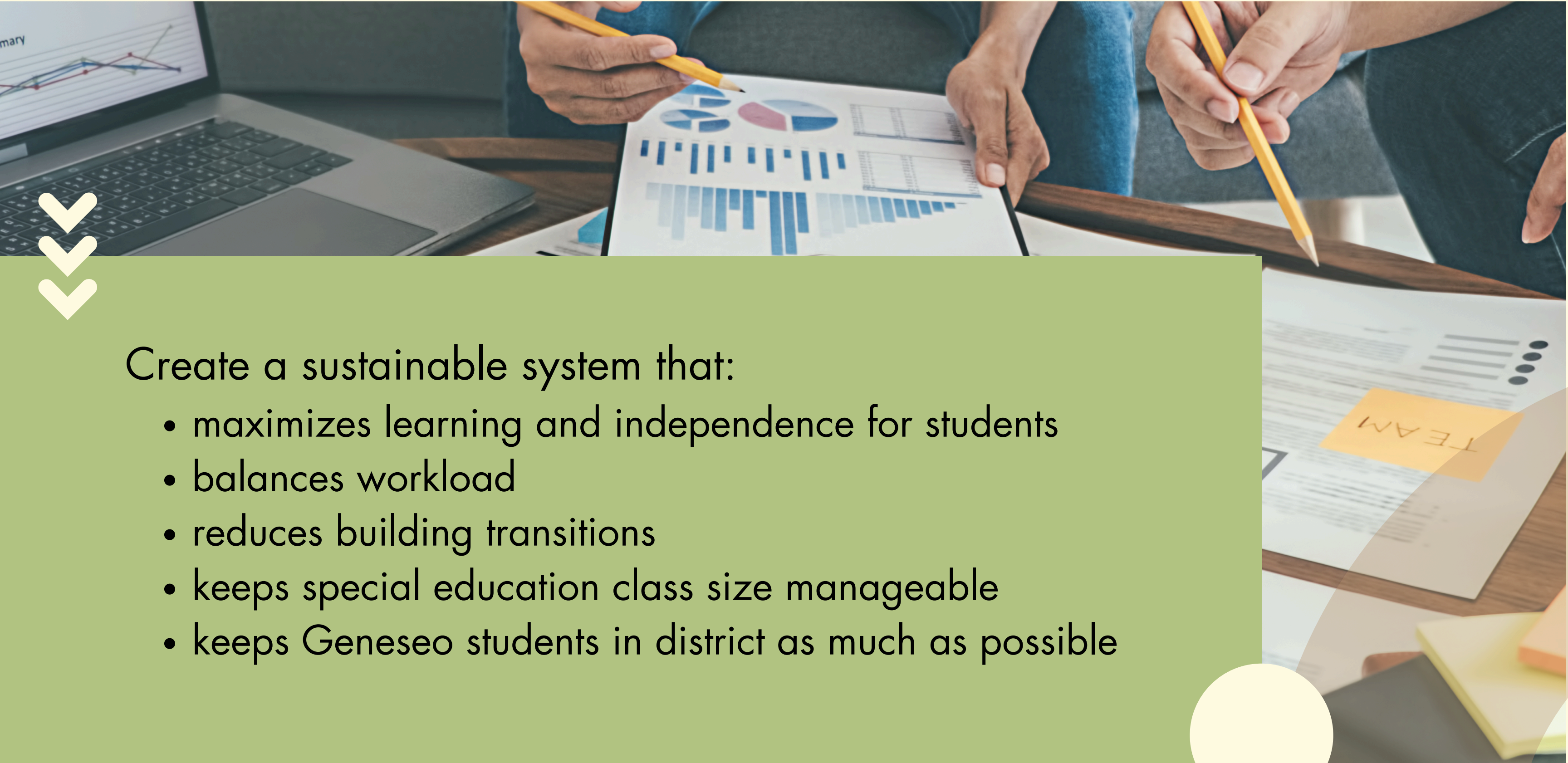
SPECIAL EDUCATION

Teach, Learn, Care

Henry-Stark Special
Education District

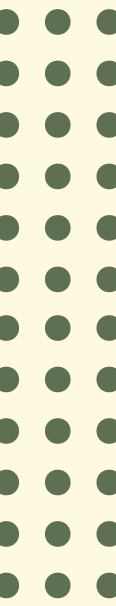
VISION

Maximize Learning to Promote Student Independence



Create a sustainable system that:

- maximizes learning and independence for students
- balances workload
- reduces building transitions
- keeps special education class size manageable
- keeps Geneseo students in district as much as possible



Special Ed. Program Overview



Level 1- Resource

Least restrictive with the lowest amount of support. Supplemental instruction for 30 minutes to an hour per day.




Level 2- Cross-Categorical

More intensive support. Academic replacement instruction for 50% or more of the day in a self-contained classroom.

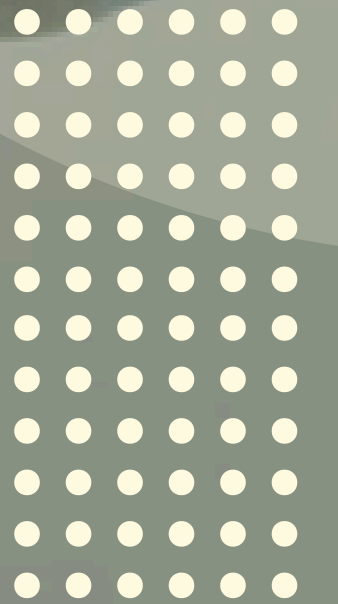


Level 3- Life Skills

The most intensive support. Functional instruction for 50% or more of the day in a self-contained classroom.

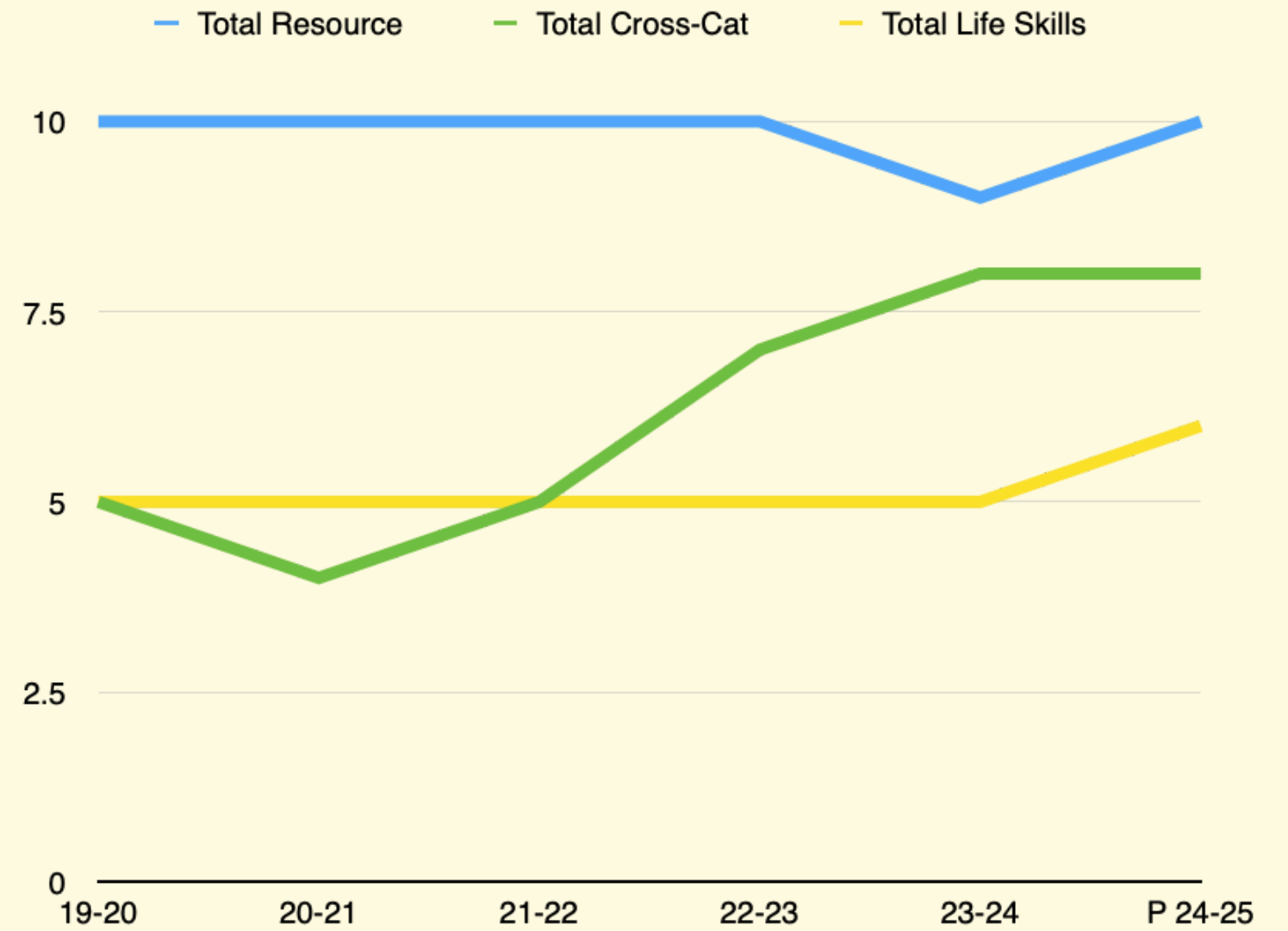
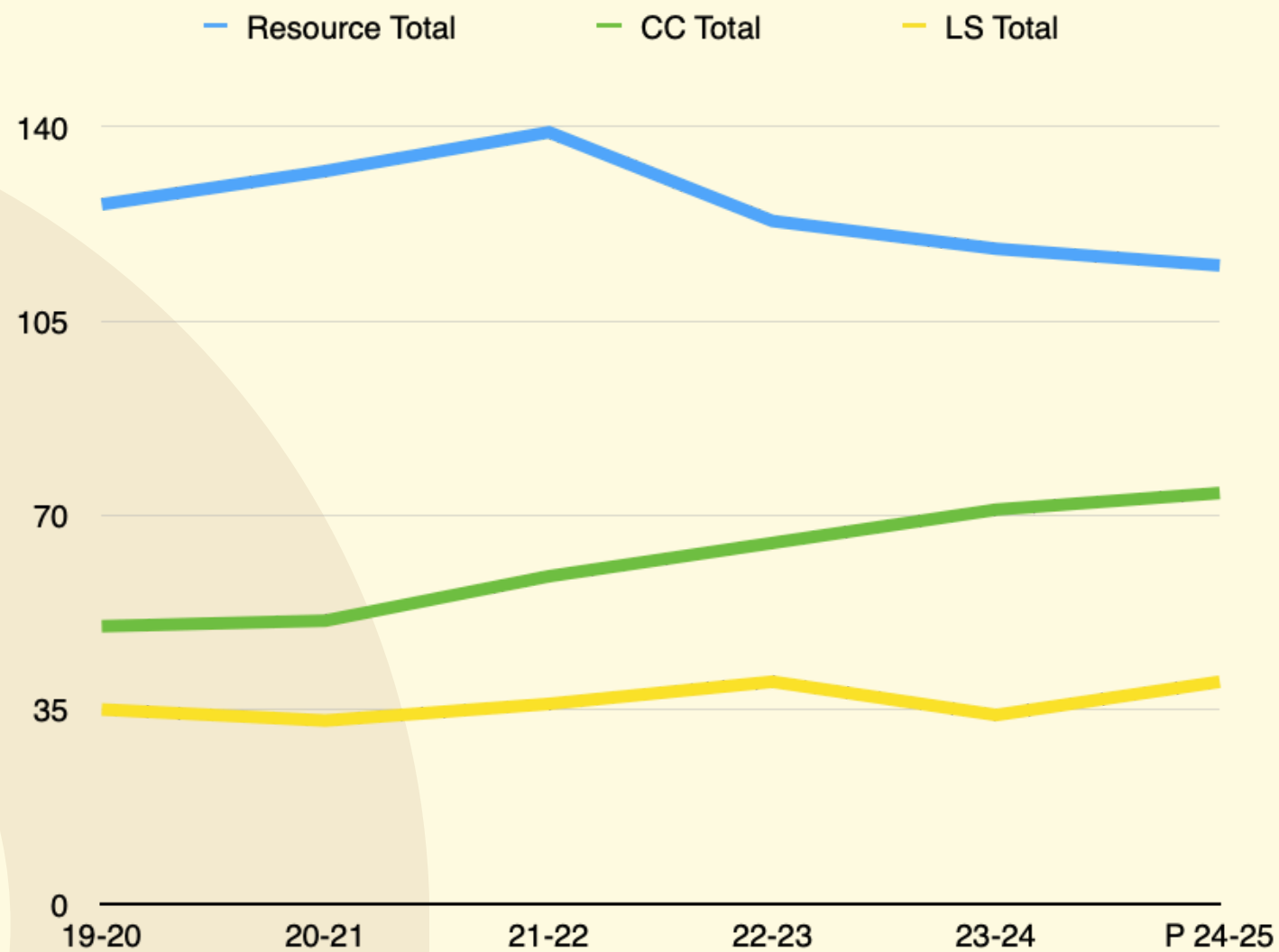


A WALK THROUGH »» THE NUMBERS



DATA ANALYSIS

- Percentage static at 11% over time.
- Overall decreasing at high school, increasing at elementary
- Student complexity and need has increased. This can be seen in the decrease in resource numbers but an increase in cross-cat and life skills.
- Due to increased need, we've added 2 teachers in the last 2 years.
- Projected to add 2 more for next year.
- 18.7% of move-ins have IEPs



● Students

● Teachers

OTHER FACTORS



Outside Programming:

- Black Hawk Center is no longer accepting students out of their cooperative, so this is no longer an option
- High Road does not have space or has inadequate programming

More Numbers:

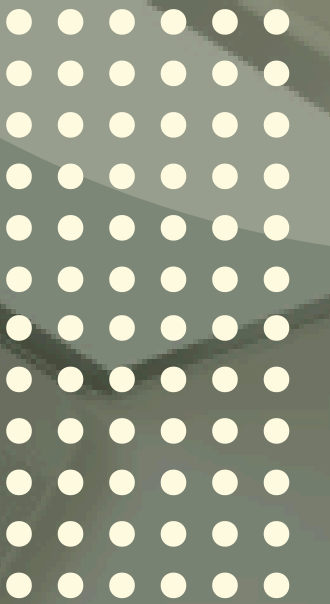
- 18 students are moving from ECE to K
- With the most significant needs we've seen in my time here.
- 7 recommended Life Skills
- 6 recommended Cross-Cat
- Unable to predict move-in numbers

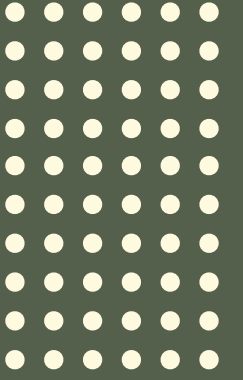
Need:

- Keep the cross-cat teacher we were planning to eliminate
- Add 1 life skills teacher
- Result- 2 more classes than projected



CHALLENGES





CHALLENGES



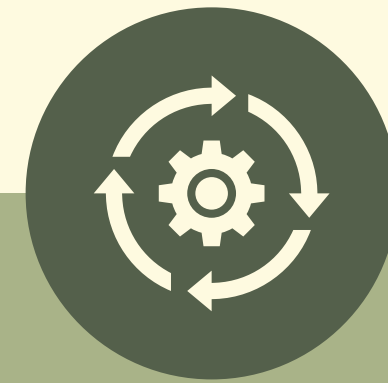
Space

- Where will we put the added life skills classroom?
- Will we keep the current CC in the Southwest Co-Lab?



Workload

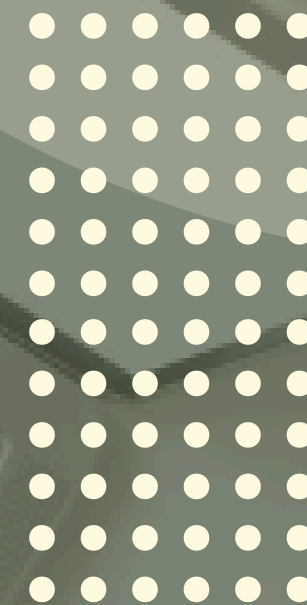
- Millikin has increased workload for all staff (teachers, principal, paras, related services, etc) due to housing 4 special education classrooms



Transitions

- Special Education students must move buildings to participate in their recommended program.

OPTIONS





OTHER DISTRICTS

Out of District Students Attend in Another District:

- We have 7 out of district students from Pre-K to 5th
- This class of 7 students come from two programs. It would be difficult to serve these very different needs within one classroom.
- The 7 student reduction would not be significant enough to reduce the overall number of classes needed.

Move the 2 Added Classes to a Neighboring District:

- Bus Geneseo students to that district program
- Geneseo parents do not currently prefer changing buildings, going to another district would be a challenging sell
- Students would go to another district for only a few grades and then transition back to Geneseo





REDUCE GEN ED SECTIONS

- Students would need to move buildings to balance class sizes
- Negative impact on teaming.
- Yearly change in teaching teams.
- Bandaid Solution

OTHER LOCATIONS

Vibrant Building:

- Could house 4 classrooms, which?
- Would require increase in staffing (admin, related services)
- If all special ed, limits access to non-disabled peers
- Results in a public day school model and is not least restrictive.

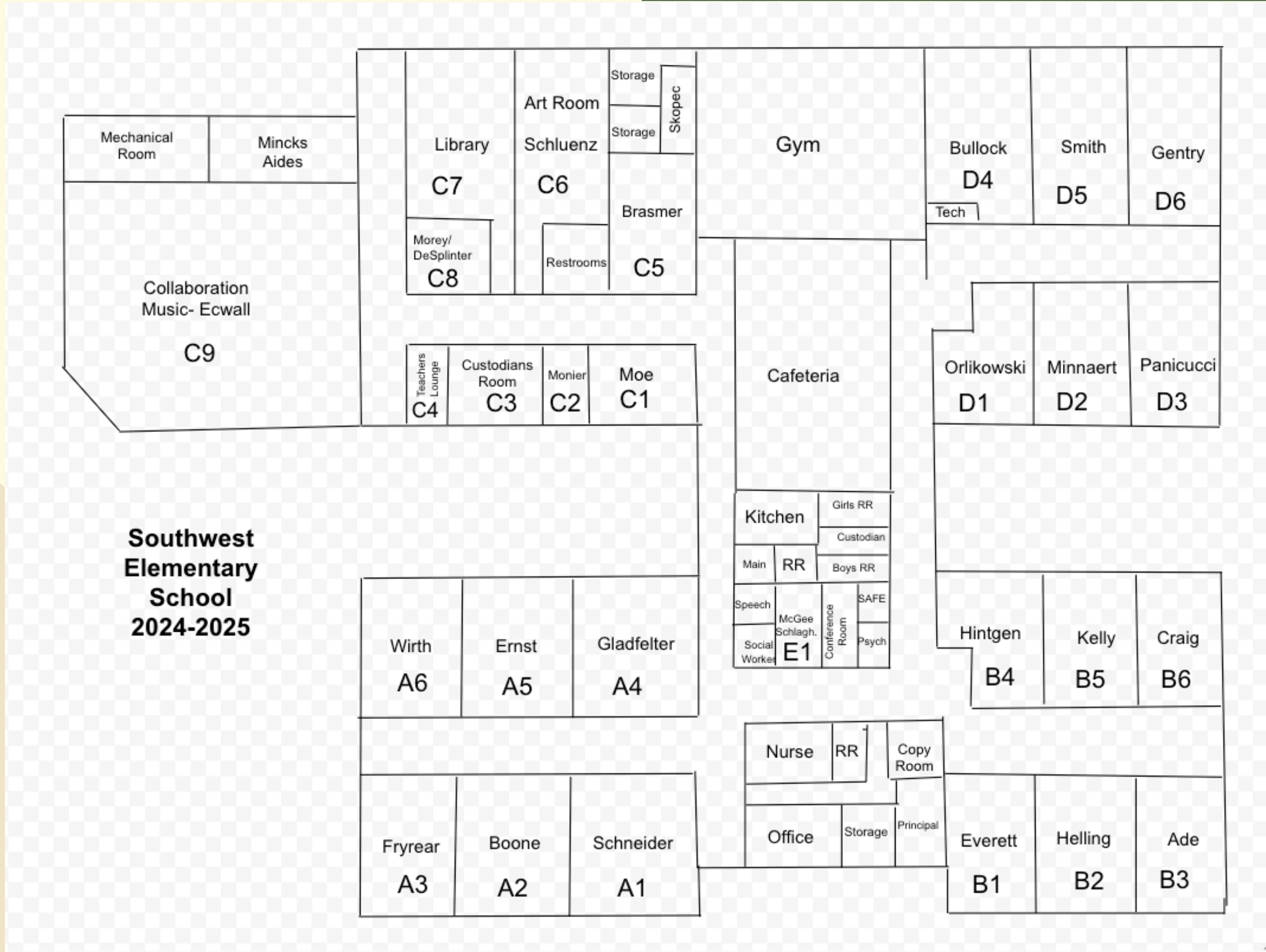
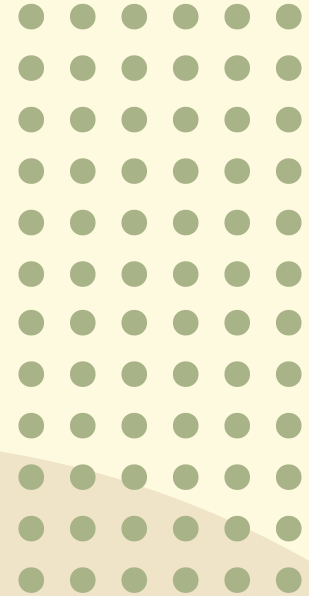
Atkinson ROE Building:

- No space available

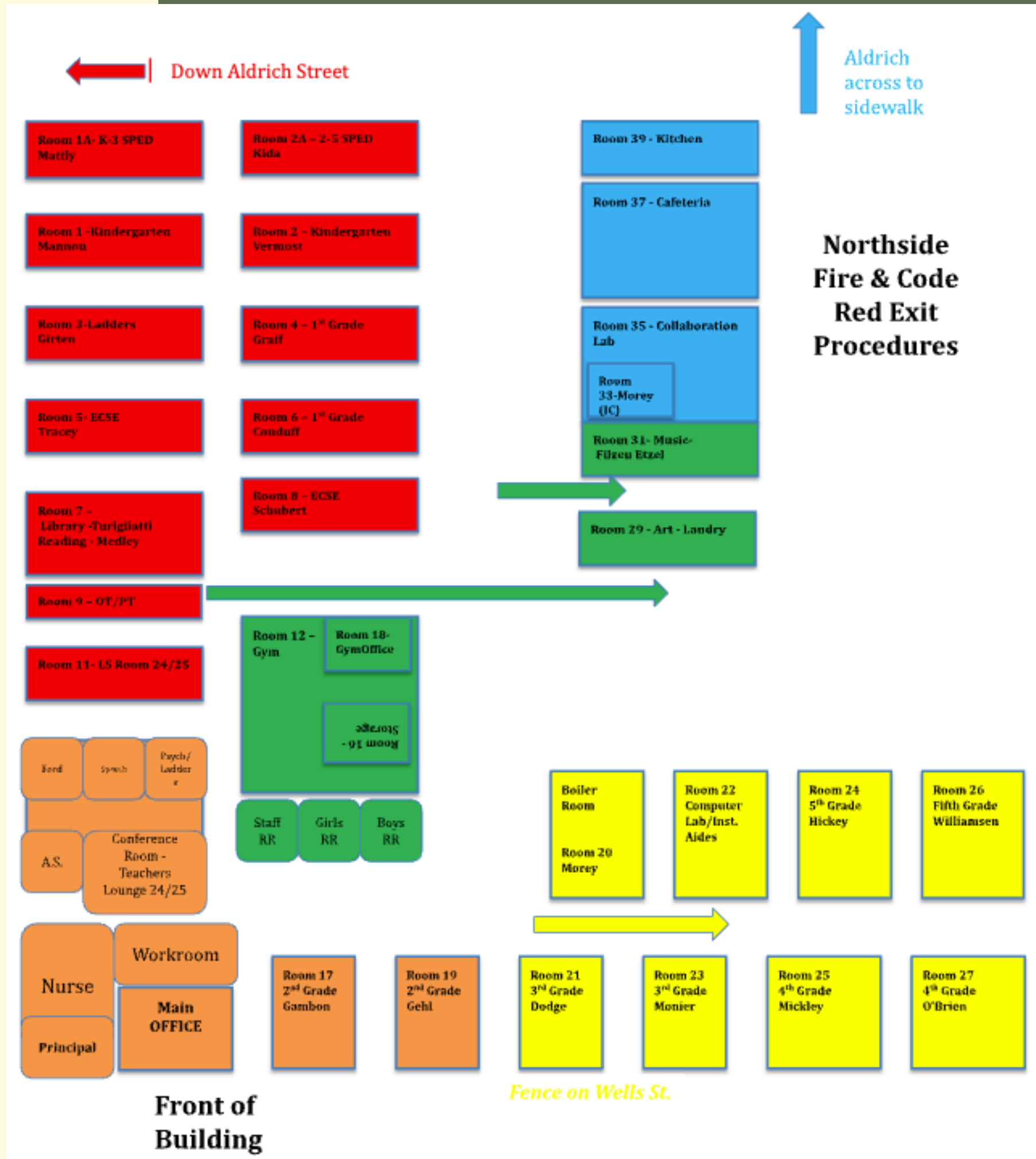
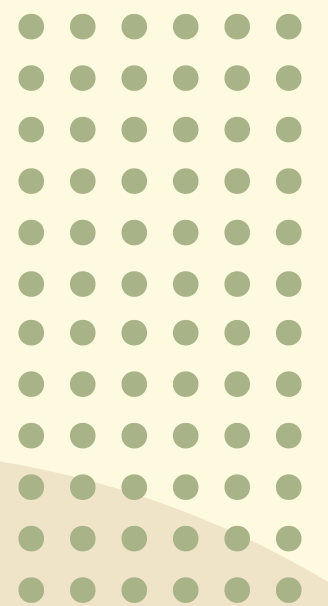
Is this a permanent solution?



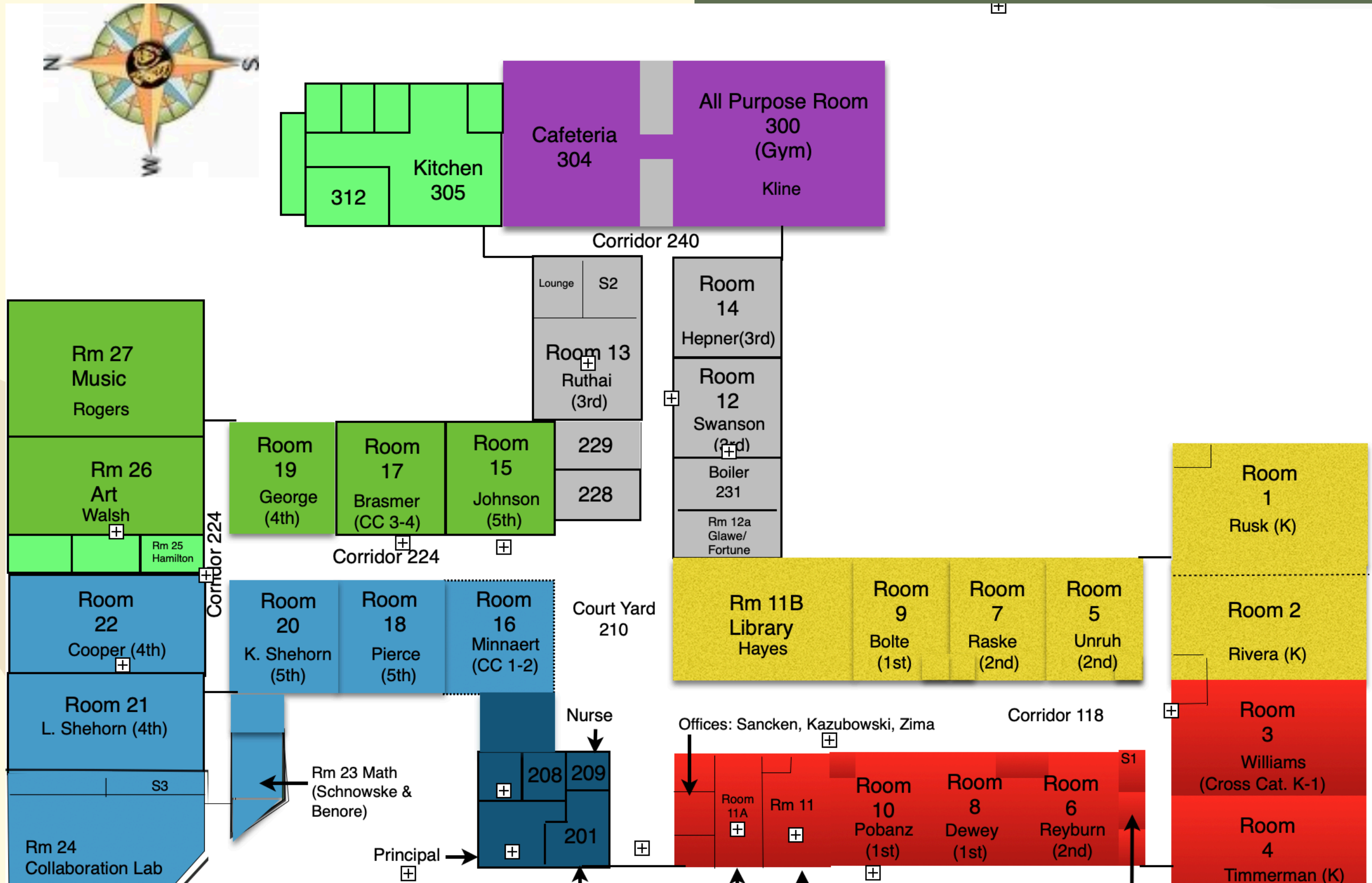
SOUTHWEST



NORTHSIDE



MILLIKIN



METHODOLOGY

PROPOSAL

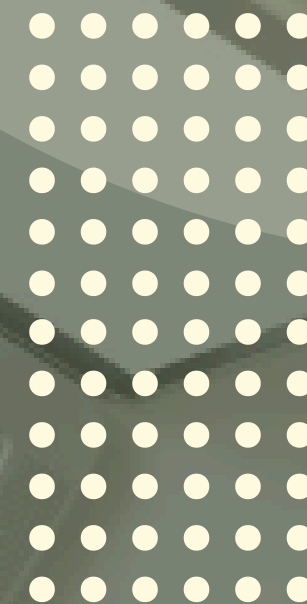




PROPOSAL

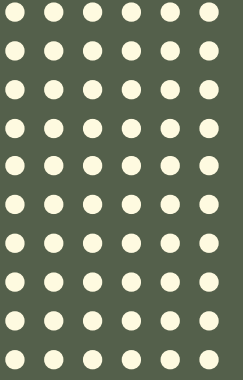
Geneseo will partner with Henry-Stark to add an additional classroom at Northside and two additional classrooms at Southwest.

OPPORTUNITY





OPPORTUNITY



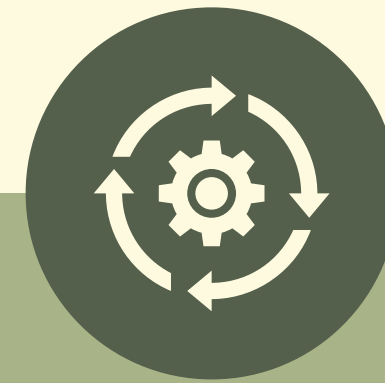
Space

- Building classrooms is a lasting solution.



Workload

- Adding classrooms at Southwest balance the special education load across all buildings.



Transitions

- Both Millikin and Southwest will have a K-5 cross-cat program reducing the need for students to transition once placed in a program.

HISTORY

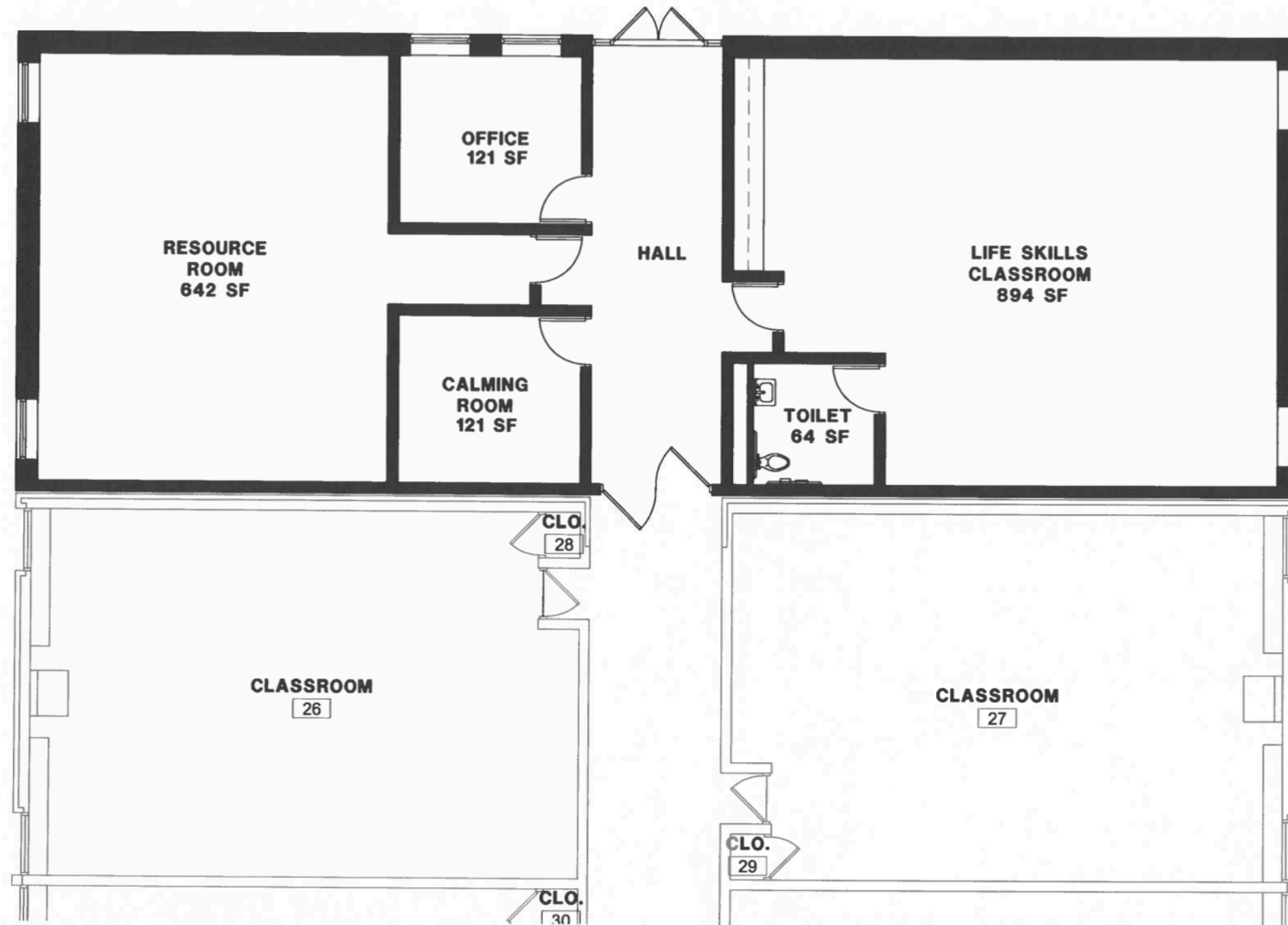
Previous Expansion Through Construction



- In 2010, in conjunction with the American Recovery and Reinvestment Act of 2009 (ARRA), Geneseo CUSD 228 and Henry-Stark Cooperative applied for and received an IDEA Part B Flow-Through grant in the amount of \$520,525. The district used the funds to add two (2) classrooms at Northside Elementary.
- It was thought that these additional classrooms would accommodate the growing need and increased number of students with disabilities within the Henry-Stark Cooperative and within the district for the foreseeable future.



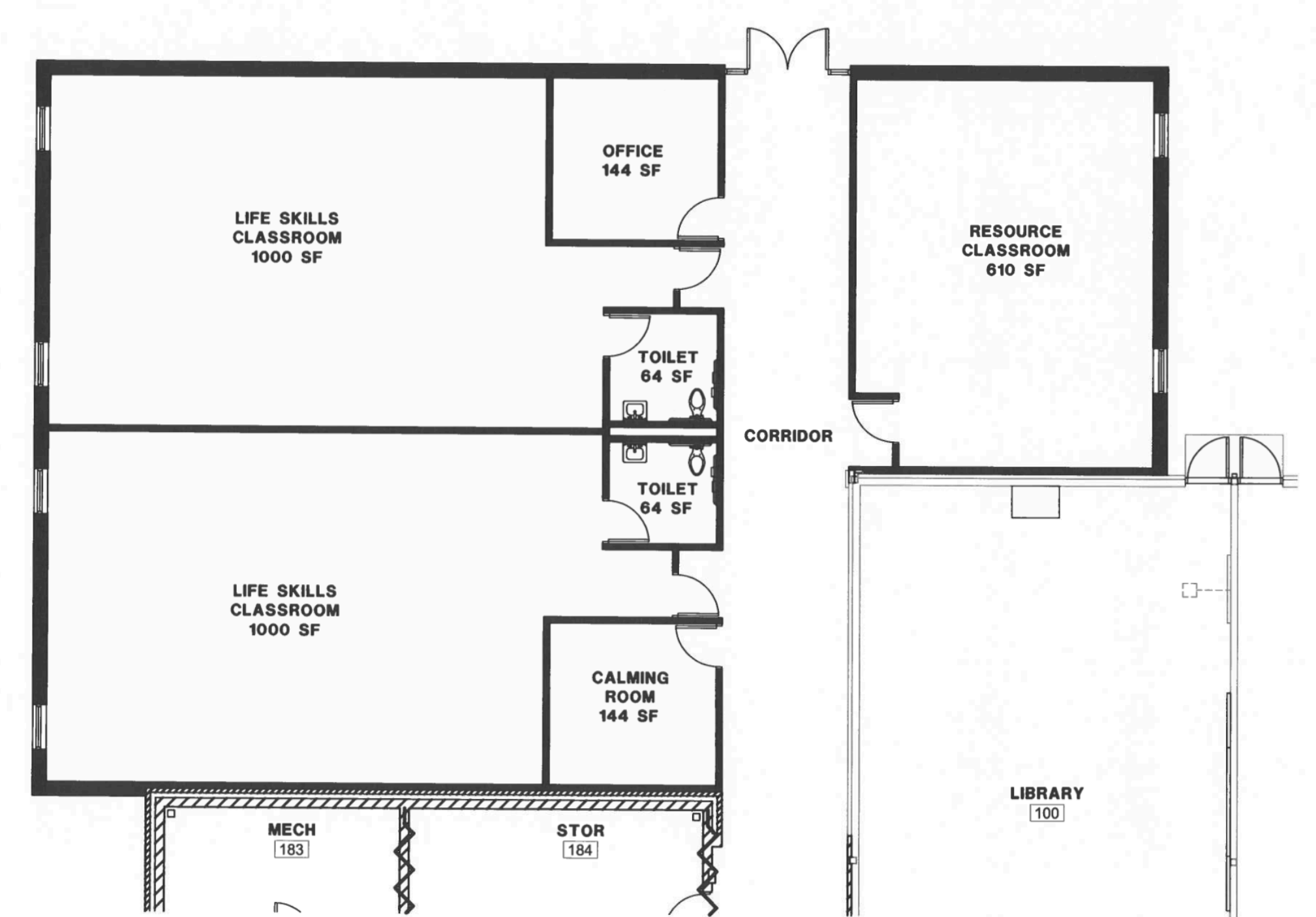
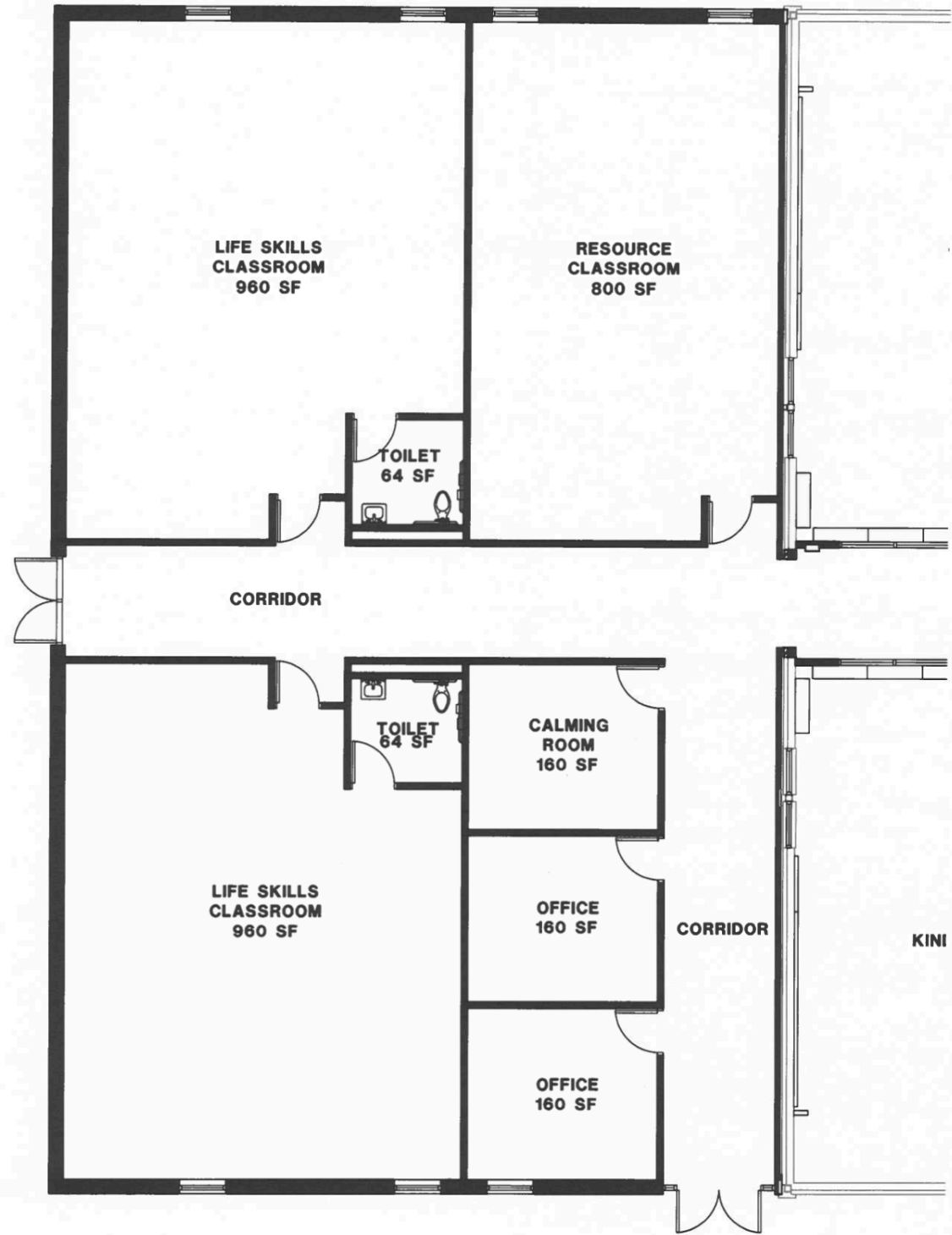
NORTHSIDE



- Northside is land locked
- Location is off the 5th grade wing
- Two classrooms are added due to square footages and symmetry



SOUTHWEST



COST

Since COVID, school construction costs have risen 40-50%. We saw this firsthand with the construction of our new Career and Technical Education Center. We anticipate that the total cost of the project will be approximately \$5.0 million. Higher than expected. We would use a combination of 1% sales tax revenue as well as partnering with the Henry-Stark Cooperative to fund the construction. No additional burden to local taxpayers would be necessary.



THANK
YOU

