

CTE Facility

Board Update: September 8, 2022



GENESEO
COMMUNITY UNIT
SCHOOL DISTRICT #228

Where the *future* grows.

Market Conditions & Strategy

Lead Times

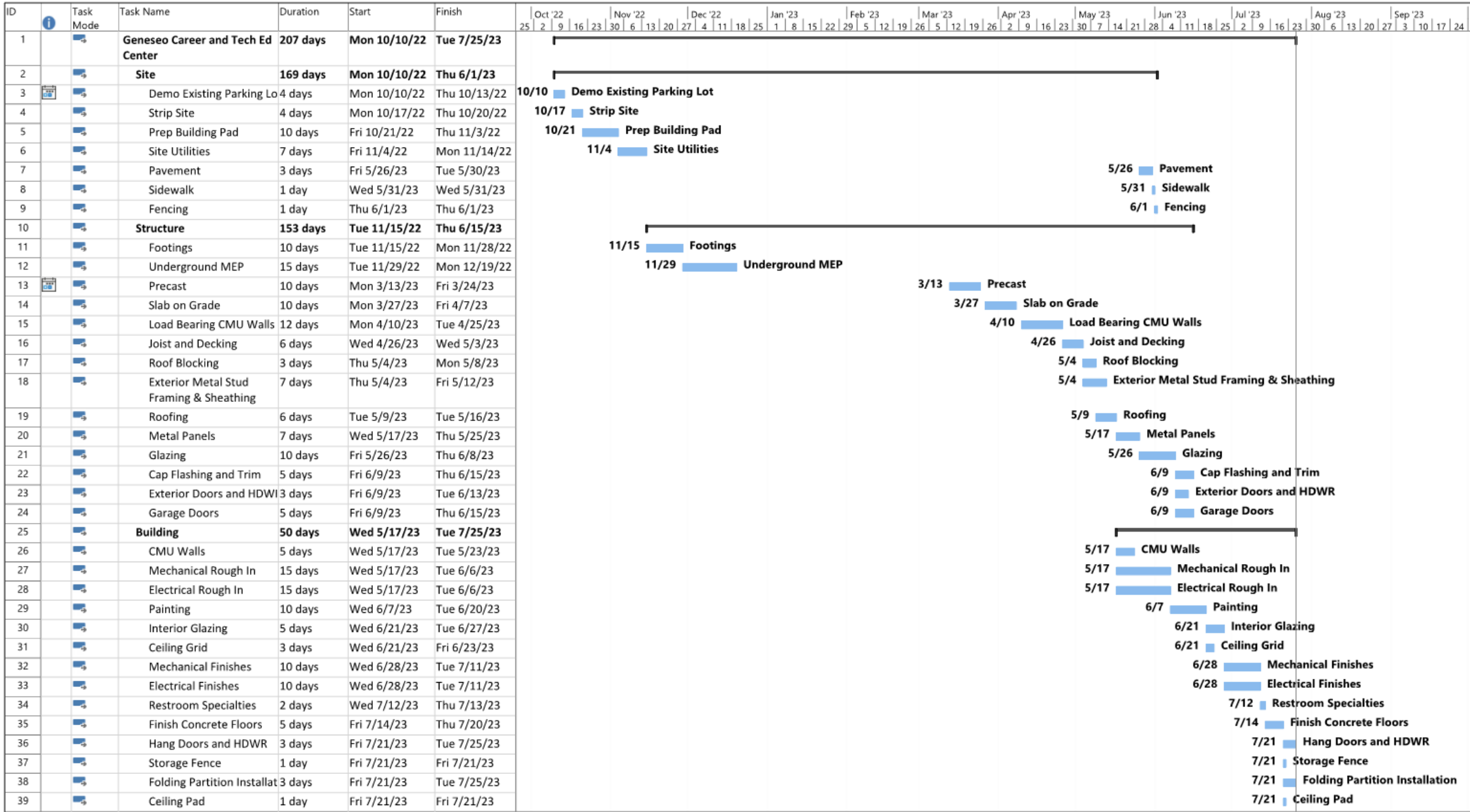
- Precast concrete has been the “bottleneck” - reassurance has been given of March delivery
- Equipment manufacturers are requiring an extensive amount of time for delivery of their products
- Strategy: implement construction operations & continue to look for opportunities to expedite fabrication & delivery

Equipment Costs

- Manufacturers have steadily increased their equipment & material costs due to economic conditions (over 20% in some cases).
- Strategy: expedite approval of submittals & shop drawings- allowing contractors to procure and avoid price hikes

Budget Status

- Project team has been in discussions with contractors to: identify cost savings and solicit multiple proposals for construction overhead items. This will continue as construction progresses
- Strategy: work to identify budget saving items & reduce potential change orders



GENESEO

COMMUNITY UNIT
SCHOOL DISTRICT #228

Where the future grows.



Questions?

